

## Existing text

### 1.50 Measurement and Measurers

1.51 Except where other methods of measurement are specifically indicated all measurement shall be carried out in accordance with the current ISAF, Equipment Rules of Sailing.

1.52 Only a measurer nominated by a National Authority and approved by the NFIA shall measure a yacht, its spars, sails and equipment, and sign the declaration on the measurement form. After consultation with the NA however, the NFIA may approve one or more individuals within a sail loft to measure sails manufactured by that loft.

1.53 A measurer shall not measure a yacht, its spars, sails or equipment owned or built by himself, or in which he is an interested party, or has a vested interest, however measurers within a sail loft as stated in rule 1.52 are excluded from this rule for sail loft measurement only.

1.54 New or substantially altered sails shall be measured by a measurer who shall apply an official stamp or fix an official sail button onto the sail according to the regulations of the NA and near this, his signature and date shall be indelibly written.

## New text

### 1.50 Measurement and Measurers

1.51 Except where other methods of measurement are specifically indicated all measurement shall be carried out in accordance with the current ISAF, Equipment Rules of Sailing.

1.52 Only a measurer nominated by a National Authority and approved by the NFIA shall measure a yacht, its spars, sails and equipment, and sign the declaration on the measurement form. After consultation with the NA however, the NFIA may approve one or more individuals within a sail loft or a spar manufacturer to measure sails or spars manufactured by that loft or spar manufacturer.

1.53 A measurer shall not measure a yacht, its spars, sails or equipment owned or built by himself, or in which he is an interested part, or has a vested interest, however measurers within a sail loft or spar manufacturer as stated in rule 1.52 are excluded from this rule for sail loft or spar measurement only.

1.54 New or substantially altered sails shall be measured by a measurer who shall apply an official stamp or fix an official sail button onto the sail according to the regulations of the NA and near this, his signature and date shall be indelibly written.

## Existing text

### 6.2 Aluminium Alloy Mast.

The aluminium alloy mast shall comply with paragraphs 6.1.5 – 6.1.14 and the paragraphs 6.2.1 – 6.2.10 stated below. The mast shall be constructed out of one continuously drawn extrusion with integrated fixed groove for the main sail luff rope

6.2.1 The untapered part of the mast shall comply with the OFFICIAL Outliner Aluminium alloy mast section drawing. It shall have the following dimensions:

Athwartships: Min = 103 mm. Max = 106 mm.

Fore and aft: Min = 115 mm. Max = 118 mm

Below the upper sail entry point a circular section diameter = 105+/- 5 mm is permitted

6.2.2 The fore and aft dimension of the keel stepped mast shall be reduced at deck level to Max = 110 mm by removing the luff groove. This dimension is permitted between the Mast Heel Point and the Upper Sail Entry Point 600mm above the Lower Mast Point. Alternatively the luff groove above deck level and below the Upper Sail Entry Point may be opened out.

6.2.3 The mast shall be tapered from above a point 5500mm but not more than 6500mm above the Lower Mast Point to the top. The taper shall be convex or straight. However local hollows not exceeding 3mm in depth will not be considered as contravening this rule.

6.2.4 The dimension of the mast at the Upper Mast Point shall have the following dimensions:

Athwartships: Min = 60 mm Max = 70 mm.

Fore and aft: Min = 65 mm Max = 80 mm

6.2.5 The method of attachment of standing rigging is optional.

6.2.6 Running rigging shall be led externally along the length of the mast.

## New text

### 6.2 Aluminium Alloy Mast.

The aluminium alloy mast shall comply with paragraphs 6.1.5 and 6.1.7 – 6.1.14 and the paragraphs 6.2.1 – 6.2.10 stated below. The mast shall be constructed out of one continuously drawn extrusion with integrated fixed groove for the main sail luff rope.

Each mast manufactured or measured after 01 January 2009 shall permanently have attached to it, approx. 100mm above the Heel plug and on the starboard side of the spar, an official N.F.I.A. plate, on which the masts particulars, in accordance with Rule 6.2.10, shall be entered. The manufacturer shall punch or engrave the plate after it has been fixed to the spar to ensure that it can not be transferred to any other spar.

6.2.1 The mast tube shall comply with the following dimensions and in accordance with the aluminium alloy mast section drawing No. 12.

At 600mm above MB I to maststep:

Athwartships: Min dia = 100mm. Max = 112mm.

Fore and aft: Min dia = 100mm. Max = 112mm

At MB II:

Athwartships: Min dia = 100mm. Max = 112mm.

Fore and aft: Min dia = 115mm. Max = 130mm

At MB III:

Athwartships: Min dia = 60mm. Max = 94mm.

Fore and aft: Min dia = 65mm. Max = 100mm

6.2.2 The untapered or unreduced part of the mast tube shall have a section weight not less than 3,10 kg/m.

6.2.3 The mast shall be tapered from above a point 5500mm but not more than 7000mm above the Lower Mast Point to the top. The taper shall be convex or straight. However local hollows not exceeding 3mm in depth will not be considered as contravening this rule.

6.2.4 The method of attachment of standing rigging is optional.

6.2.5 Running rigging may be lead internally along the mast. Halyards shall be lead out above deck.

6.2.7 The mast when supported horizontally with the groove uppermost at the Lower and Upper Mast Point shall deflect not more than 30 mm and not less than 22 mm at the Forestay Height Point when loaded with 25 kg at the Forestay Height Point. With the mast supported on its side on the same points it shall deflect not more than 40 mm and not less than 27 mm at the Forestay Height Point when loaded with 25 kg at the Forestay Height Point.

6.2.8 The mast complete with all fixed fittings and jumper struts shall weigh not less than 37 kg (33 kg for the mast stepped on the deck). If the mast is found to be underweight a corrector weight shall be permanently fixed inside or outside the mast profile so as to bring the weight up to the required minimum. Position of the corrector weight is optional (notice that the requirement in rule 6.2.9 must also be kept). The position and weight of the corrector weights shall be noted on the measurement form.

6.2.9 The mast complete with all fixed fittings, jumper struts, standing and running rigging shall weigh not less than 17.5 kg ( 18 kg for the mast stepped on the deck ) when it is supported at the Lower Mast Point and weighed at the Upper Mast Point. For the purpose of the measurement the halyards shall be in sailing position and the standing rigging lightly secured along the mast. The ends of the rigging below the Lower Mast Point shall hang freely or may rest on the ground so as not to affect the weight at the Upper Mast Point. If the mast is found to be underweight at the Upper Mast Point a corrector weight shall be permanently fixed inside or outside the mast profile so as to bring the weight at the Upper Mast Point up to the permitted minimum. Position of the corrector weight is optional. The position and weight of the corrector weight shall be noted on the measurement form.

6.2.10 A hinge is permitted between deck level and 500 mm above deck level. The hinge shall be locked when in sailing position.

(Deleted)

6.2.6 The mast complete with all fixed fittings and jumper struts shall weigh not less than 37kg (33kg for the mast stepped on the deck). If the mast is found to be underweight a corrector weight shall be permanently fixed inside or outside the mast profile so as to bring the weight up to the required minimum. Position of the corrector weight is optional.

6.2.7 The mast complete with all fixed fittings, jumper struts, standing and running rigging shall weigh not less than 17.5kg (18kg for the mast stepped on the deck) when it is supported at the Lower Mast Point and weighed at the Upper Mast Point. For the purpose of the measurement the halyards shall be in sailing position and the standing rigging lightly secured along the mast. The ends of the rigging below the Lower Mast Point shall hang freely or may rest on the ground so as not to affect the weight at the Upper Mast Point. If the mast is found to be underweight at the Upper Mast Point a corrector weight shall be permanently fixed inside or outside the mast profile so as to bring the weight at the Upper Mast Point up to the permitted minimum. Position of the corrector weight is optional. The position and weight of the corrector weight shall be noted on the measurement form.

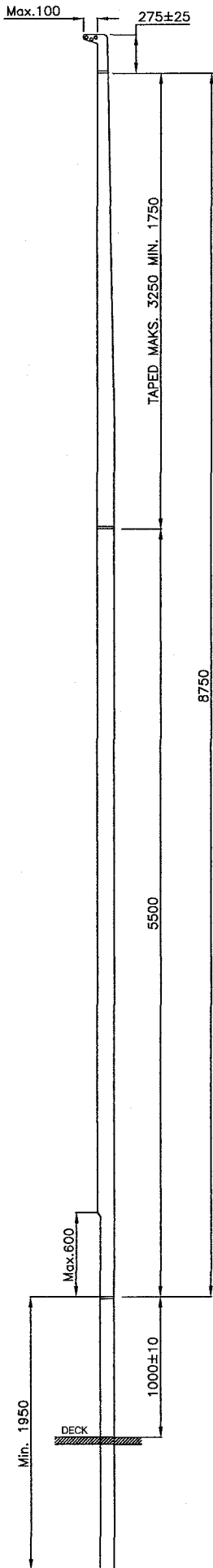
6.2.8 A hinge is permitted between deck level and 500mm above deck level. The hinge shall be locked when it is in sailing position.

6.2.9 The clear opening of the mast hole in the deck shall not be larger than 120mm diameter. The diameter of the mast at the top of the deck shall not be less than 100mm and not more than 112mm.

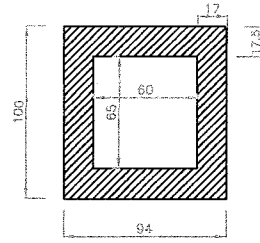
6.2.10 The mast shall be supplied with following permanently information:

- Manufacturer: \_\_\_\_\_
- Year of manufacture: \_\_\_\_\_ Spar No: \_\_\_\_\_
- Section weight: \_\_\_\_\_
- Top weight: \_\_\_\_\_
- Corrector weight: \_\_\_\_\_ gr. fixed \_\_\_\_\_ mm above MB l.

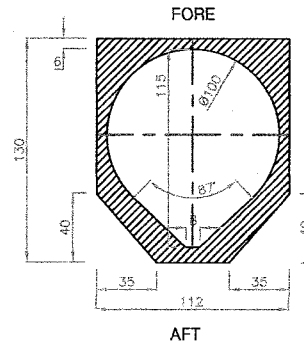




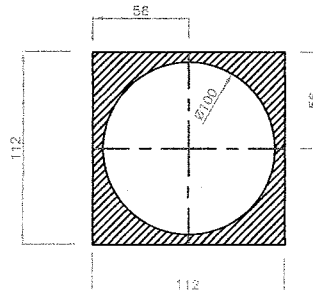
SECTION AT M.B. no. III  
 OUTSIDE MASTPROFILE HAS TO FIT IN THE HATCHED AREA



SECTION FROM M.B. no. II TO 600 MM. ABOVE M.B. no. I  
 OUTSIDE MASTPROFILE HAS TO FIT IN THE HATCHED AREA



SECTION FROM 600 MM. ABOVE M.B. no. I TO MASTSTEP  
 OUTSIDE MASTPROFILE HAS TO FIT IN THE HATCHED AREA



**NORDIC FOLKBOAT**

ALUMINIUM ALLOY MAST - SECTIONS  
 SCALE 1:20 / 1:2 01.08.08 P.J.

**DRG. No. 12**